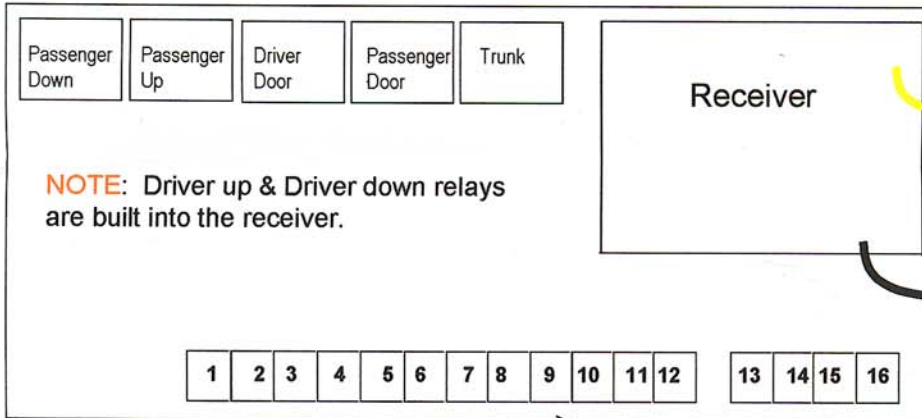
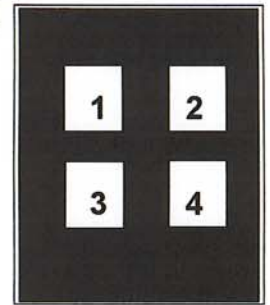




Pre-Wired 7-Way Remote

Basic Functions of the Remote Control

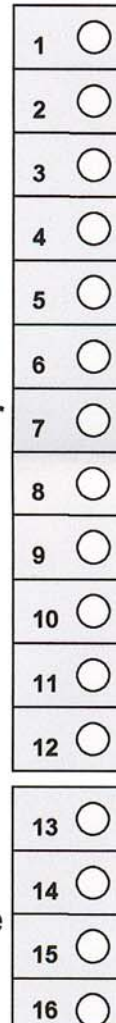
- Button 1 = Driver Window Down
- Button 2 = Driver Window Up
- Button 3 = Passenger Window Down
- Button 4 = Passenger Window Up
- Button 1 + 2 = Driver Door Open
- Button 1 + 3 = Passenger Door Open
- Button 1 + 4 = Trunk



Yellow Safety Wire
Note: causes remote **NOT** to work when ignition is on.

Black
 Receiver Antennae
DO NOT Ground wire

- +12v Optional Push button – Driver Door
- +12v Optional Push button – Passenger Door
- +12v Optional Push button – Trunk
- Wire from Passenger Window **Motor** – Down
- Wire from Passenger Window **Motor** – Up
- Wire from Driver Door Actuator/Solenoid **Motor**
- Wire from Passenger Door Actuator/Solenoid **Motor**
- Wire from Driver Window **Motor** - Down
- Wire from Driver Window **Motor** - Up
- Wire from Trunk **Motor** or Actuator/Solenoid
- Ground: Battery or Chassis
- +12v – DC
- Wire from Power window switch down – Passenger Side
- Wire from Power window switch up - Passenger Side
- Wire from Power window switch down – Driver side
- Wire from Power window switch up – Driver Side



- 1 Wire from #87A on Relay
- 2 Wire from #87A on Relay
- 3 Wire from #87A on Relay
- 4 Wire from #30 on Relay
- 5 Wire from #30 on Relay
- 6 Wire from #30 on Relay
- 7 Wire from #30 on Relay
- 8 Blue from receiver
- 9 Blue from receiver
- 10 Wire from #30 on Relay
- 11 Black from receiver
-
- 13 Wire from #87A on relay
- 14 Wire from #87A on relay
- 15 White from receiver
- 16 White from receiver