

Instructions for #2011

401 Legend Lane • Peculiar, MO 64078

Tech Line (816) 758-4504

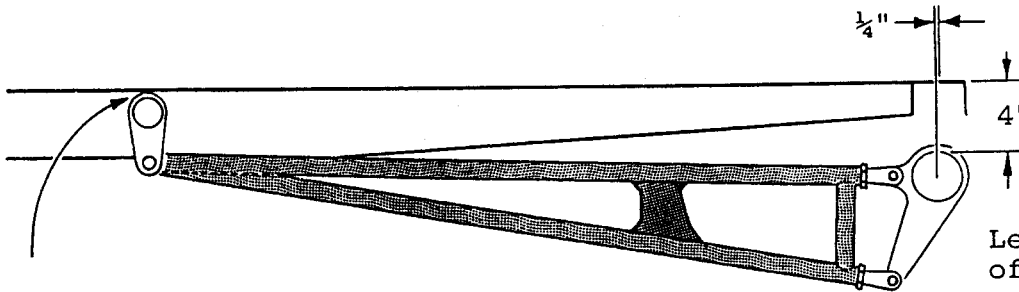
800-334-7240

Fax (816) 758-4512

## 28 - 31 Model 'A' LADDER BAR KIT

When assembling bars, lay one bar over the other and line up all 3 hook-up points with bolts.

Center of rearend is  $\frac{1}{4}$ " ahead of center of rear crossmember.



Install tube crossmember  $\frac{3}{8}$ " down from top edge of frame rail. Position rearend and work forward to locate crossmember position and rotation before welding.

Leave rear spring off and space rearend 4" down from top of frame.

