

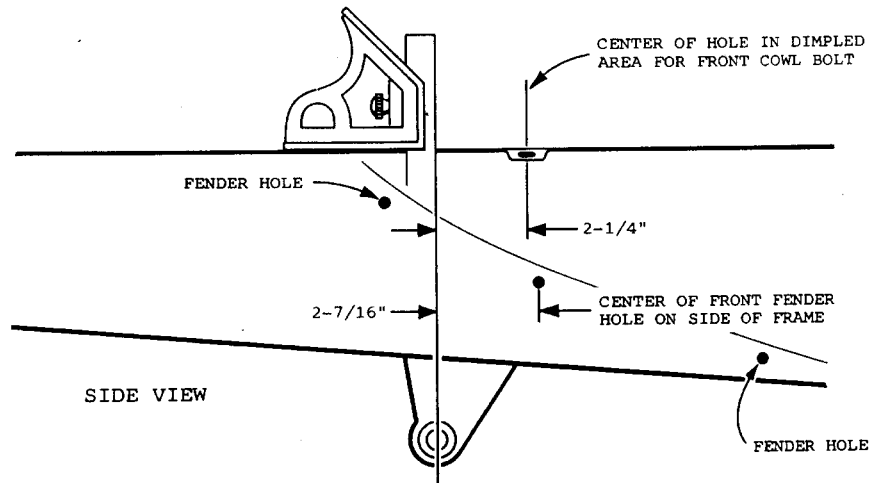
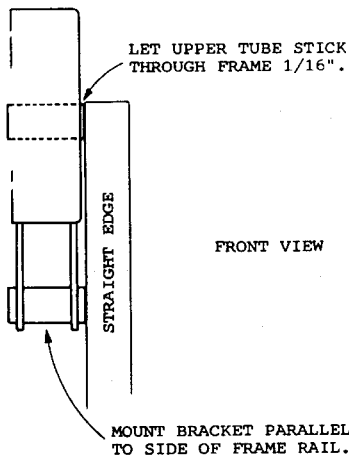
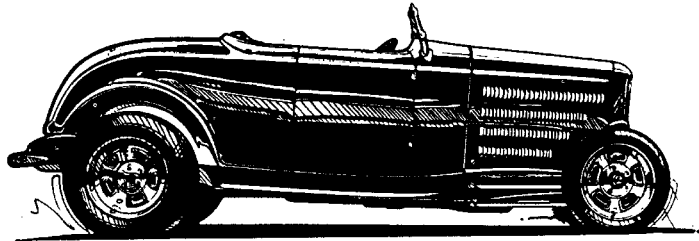
401 Legend Lane • Peculiar, MO 64078

Tech Line (816) 758-4504

800-334-7240

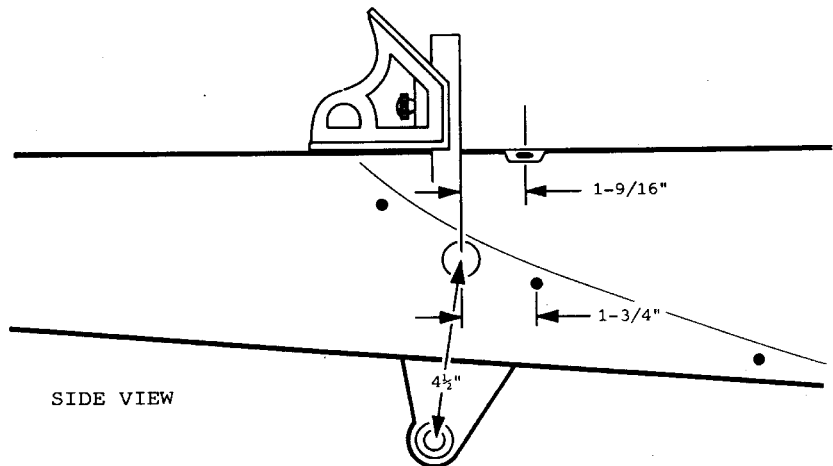
Fax (816) 758-4512

'32 FORD "HIGH BOY" 4-BAR KIT



The bracket is positioned in relation to either the stock front cowl bolt hole in the dimpled area on top of the frame, or the stock fender bolt hole (indicated above) on the side of the frame rail. From the center of either hole measure forward the correct amount to a square placed on the top surface of the frame. The bracket is positioned so the center of the tube is located on this line. Tack weld the bracket to the frame.

NOTE: The recommended use of this kit requires a lower than stock front crossmember. This can be achieved by modifying the stock crossmember to move the spring up 1-inch vertically, or by replacing the stock crossmember with a '31 Model A (original or repro type) crossmember. Because the position of the brackets and tubes, where the bars attach to the frame, is also relative to the position of the front crossmember, it is important that the front-to-rear location of the crossmember be the same as stock.



The upper bar is mounted to a tube installed through the frame rail and boxing plate. The position of this tube is also related to the same stock holes in the frame. From the center of either hole measure forward the correct amount to a square placed on the top surface of the frame and scribe a line. Then measure up 4 1/2-inches from the center of the tube in the bracket to a point on the line. This is the center of the tube installed in frame.