

401 Legend Lane • Peculiar, MO 64078

Tech Line (816) 758-4504

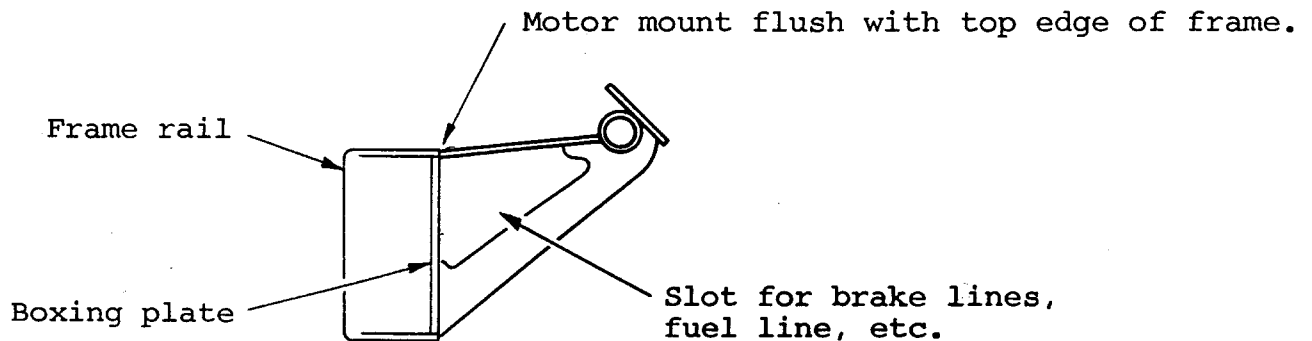
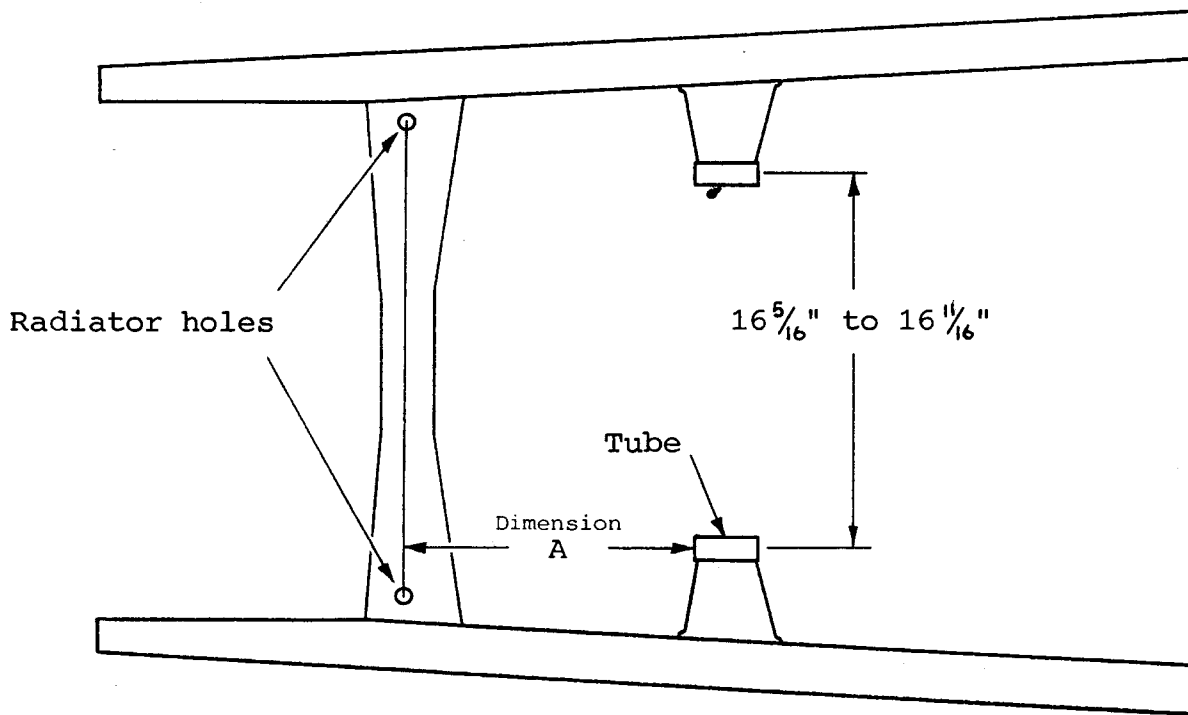
800-334-7240

Fax (816) 758-4512

'32 FORD :

SMALL BLOCK CHEVY MOTOR MOUNTS

NOTE: Be sure to use original type '58-'72 Chevy rubber insulator mounts (non-interlock style).

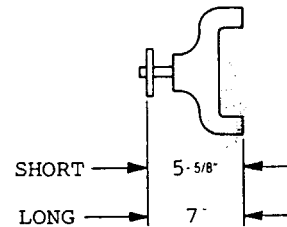


IMPORTANT: Read this before choosing dimension A for mount position.

There are several things to take into consideration before positioning the motor mounts in the frame. You should have in mind what type of equipment you want to run (radiator thickness, type of fan, length of water pump) and be aware of the limitations or problems incurred by using certain equipment. For example, you must realize that a 4" thick radiator (1" thicker than original), a pulley mounted fan, and the "long" pump all require more room in the engine compartment. The combination of all 3 of these will move the engine back 2-1/2" more than if you use a 3" thick radiator with a pulley mounted fan on the "short" pump. If you want to leave the firewall as stock as possible, the motor must be as far forward as it can go. NOTE: With the engine as far forward as possible (the 12-1/4" dimension) the firewall can be left stock except for a slight notch in the lower flange for the bellhousing. Any further back and the firewall must be cut to clear the distributor, cylinder heads, exhaust, etc. If you're using a fiberglass body with a recessed "hot rod" firewall you'll have more room to play with. If you plan to use Vega cross steering it is best to mount the steering gear far forward on the frame. This also suggests that the engine be as far forward as possible to avoid interference at the motor mount.

These mounts can be positioned back more than the 12-1/4" recommended amount, but because the frame gets wider as it goes back the mounts will be further apart. If you exceed the 16-11/16" maximum width you can put washers between the engine block and the bolt-on rubber mounts to space them out to reach the mounts on the frame.

WATER PUMPS: There are 2 lengths of water pumps that fit small block Chevys. The "short" pump ('55 thru '68), and the "long" pump ('69 and later). The drawing identifies the 2 different lengths from the engine block surface to the pulley flange surface with the pulley removed.



FANS: The pulley mounted fans referred to are the flat front style aftermarket fans made of aluminum or fiberglass. Electric fans are the aftermarket type which mount to the front or back side of the radiator.

Listed here is the equipment you can use for each motor position designated by dimension A. We recommend the 12-1/4" position as it offers the best motor location for stock firewall and cross steering applications. Your only limitation is that you must use an electric fan if you are using a 4" thick radiator.

DIMENSION (A)	RADIATOR THICKNESS	WATER PUMP	TYPE OF FAN	TYPE OF FIREWALL
12-1/4"	3"	short	pulley or electric	stock, except for notch
12-1/4"	4"	short	electric only	stock, except for notch
13-1/4"	4"	short	pulley or electric	recessed
13-3/4"	3"	long	pulley or electric	recessed
13-3/4"	4"	long	electric only	recessed
14-3/4"	4"	long	pulley or electric	recessed