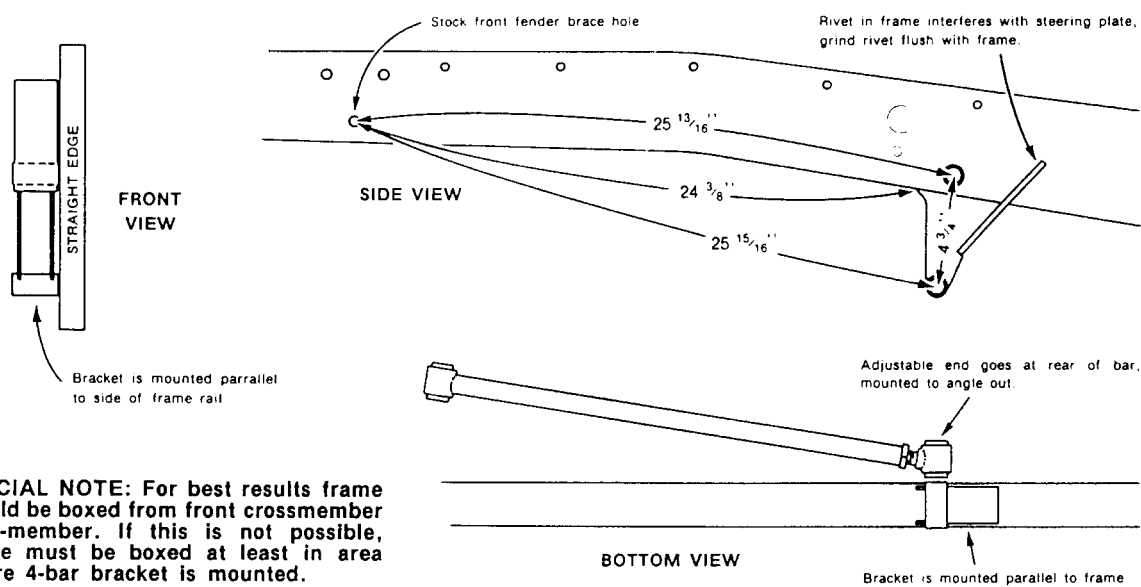


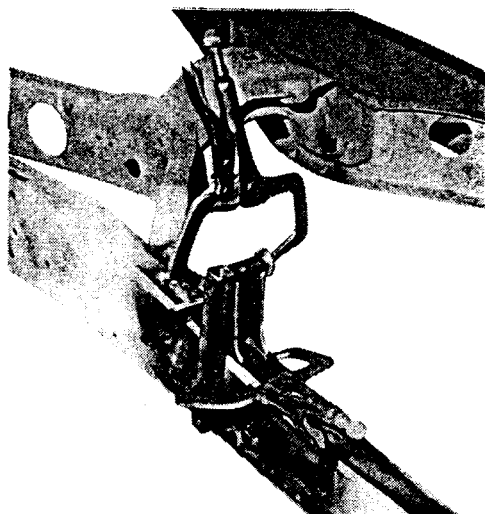
# '33-'34 4-BAR FRONT END INSTALLATION

Copyright Aug. 1977 by Pete and Jake's, a California Corporation. All rights reserved. Reprinting in whole or in part forbidden except by permission of Pete and Jake's.

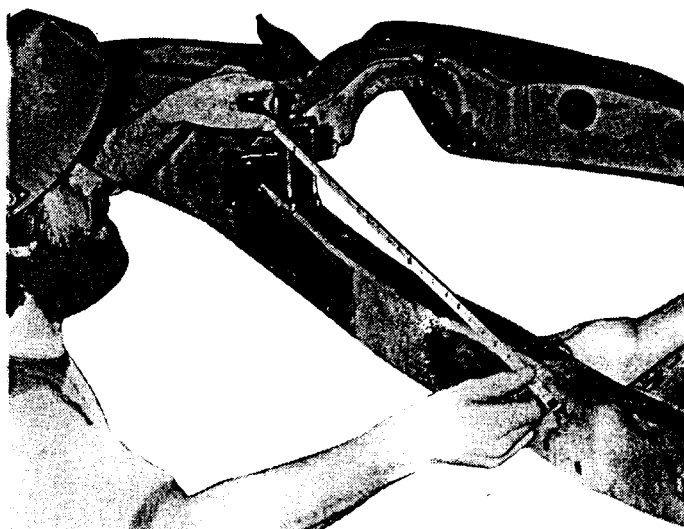
Front edge of bracket is located  $24\frac{3}{8}$ " back from center of fender brace hole indicated. Check to see that tube in bracket measures correctly from fender brace hole as the position of this tube is the important thing. Upper bar is mounted to a tube installed through the frame. Centerline of this tube is  $25\frac{13}{16}$ " back from center of fender brace hole, and  $4\frac{3}{4}$ " up from center of tube in bracket.



**SPECIAL NOTE:** For best results frame should be boxed from front crossmember to x-member. If this is not possible, frame must be boxed at least in area where 4-bar bracket is mounted.



Bracket is positioned according to measurements and clamped parallel to side of frame rail. Frame is much easier to work on when flipped up side down as seen here.



Bracket is now tack welded to frame and measurement from fender brace hole to center of tube on bracket is double checked for accuracy.