

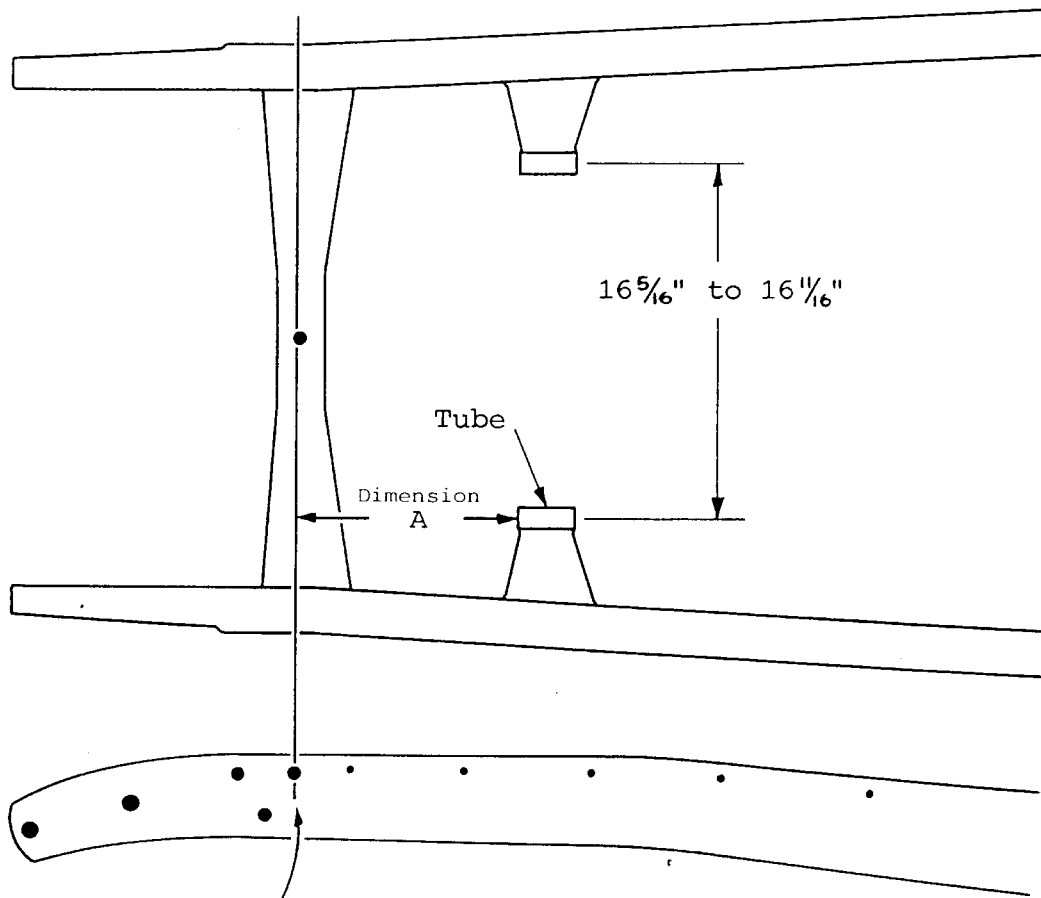
'33-'34 FORD

SMALL BLOCK CHEVY MOTOR MOUNTS

401 Legend Lane • Peculiar, MO 64078

Tech Line (816) 758-4504
800-334-7240
Fax (816) 758-4512

NOTE: Be sure to use original type '58-'72 Chevy rubber insulator mounts (non-interlock style).

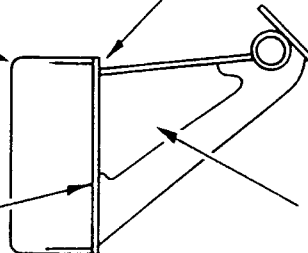


Centerline of front fender brace hole

Motor mount is placed $\frac{1}{4}$ " down from edge of frame rail.

Frame rail

Boxing plate



Slot for brake lines, fuel line, etc.